

Unmanaged Ethernet Switch

EH2316 Series

Hardware Installation Guide

Version 1.0
Updated in November, 2018



Tel: 886-3-5508137
Fax: 886-3-5508131
www.atop.com.tw

P/N : 89900520G

Package Check List

Inside the package you will find the following items:

- Unmanaged Ethernet Switch x 1
- 5-Pin 5.08mm Lockable Terminal Block x 1
- DIN-Rail Kit (Already mounted to the device) x 1
- Wall Mount Kit Optional to purchase (include M3L5 screws*2)
- Installation Guide with Warranty Card x 1



Never install or work on electrical or cabling during periods of lightning activity.
Never connect or disconnect power when hazardous gases are present.

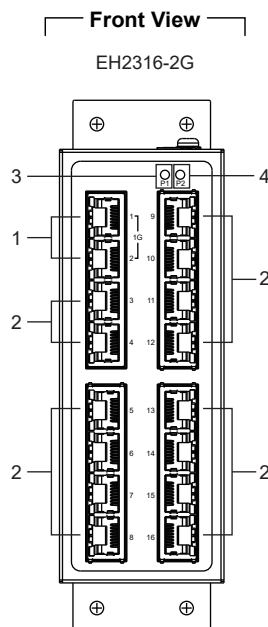


Warning: Hot Surface Do Not Touch. RESTRICTED ACCESS AREA: The equipment should only be installed in a Restricted Access Area.

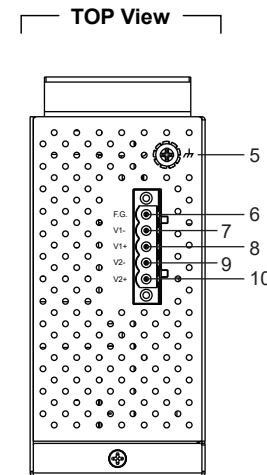


This equipment should be installed indoor and not connect directly with equipment installed outdoor.

Product Layout



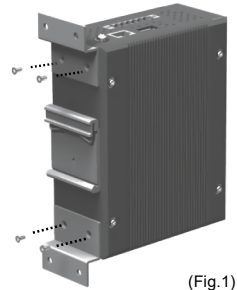
1. 10/100/1000 BASE-T(X) RJ45 Ports
2. 10/100 BASE-T(X) RJ45 Ports
3. PWR1 LED
4. PWR2 LED



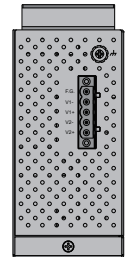
5. Grounding Screw
6. Functional Ground
- 7~8. Terminal for Power 1
- 9~10. Terminal for Power 2

Installation Overview

The device's appearance is as in the figure below.



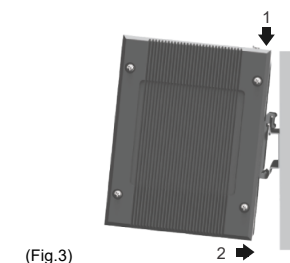
(Fig.1)



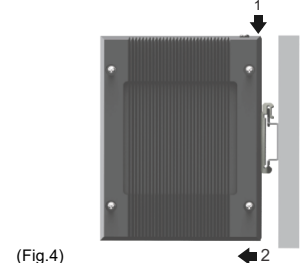
(Fig.2)

1. If you have purchased the wall mount kit, proceed to place the screws on the back of the device as show in (Fig. 1).
2. Although internal grounding has been done inside, in order to ensure overall maximum performance and protect your device, it is still strongly advised to ground the device properly; hazardous ESD can come into contact and damage your equipment. On the power terminal block, there is a terminal for Frame Ground, you can choose whether to connect it to the grounding or you may opt to connect to the grounding screw next to the terminal block (the one chosen should be connected at all times) (Fig. 2)

3. You can then choose whether to plug in the other peripheral ports at this point or do it later depending on the actual location of the device or level of comfort for performing such operation.



(Fig.3)

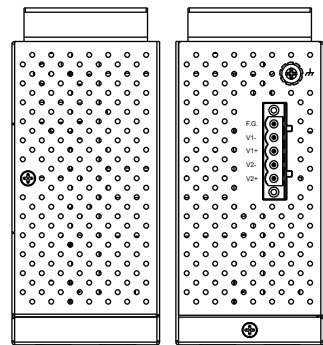


(Fig.4)

4. Once the plate has been firmly put in place, proceed to mount the whole device as shown in (Fig. 3). Proceed to (Fig. 4) if you want to remove the device from DIN-Rail.

5. Next we can then proceed to connect the device to the LAN (switch or PC, depending on the case), take care on using the RJ-45 connector; after this we can then proceed to the device's settings

- The opening to the sides are for the device's heat dissipation please never obstruct or cover them with any objects or try to insert them through it.



LED Indicators

LED	Color	State	Description
PWR1	Green	On	Power is supplied through PWR1
PWR2		On	Power is supplied through PWR2
LAN	Amber	On	Ethernet is linked at 1000Mbps
		Blinking	Ethernet is linked at 100Mbps
		Off	Ethernet is linked at 10Mbps
	Amber	On	Ethernet is linked
		Blinking	Ethernet is active and data is being transmitted
		Off	Ethernet is not linked

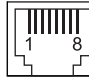
Power Requirements

This product is intended to be supplied by an UL62368-1, IEC62368-1 or IEC60950-1 certify Power Unit marked “LPS” and rated output rating: 12-48 Vdc, 0.6 A minimum, 60°C

Power input : 12-48 VDC, 0.6 A Max

Pin Assignments and Connections

10/100/1000BASE-T(X) Ethernet Pinouts

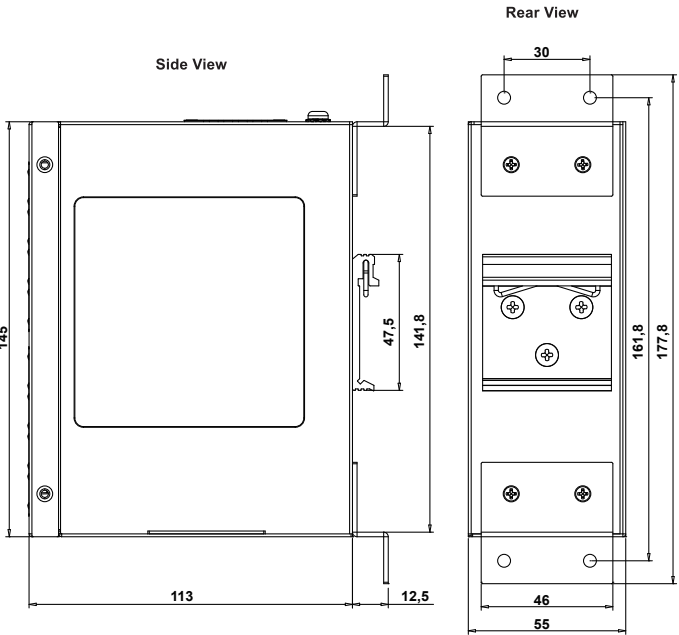
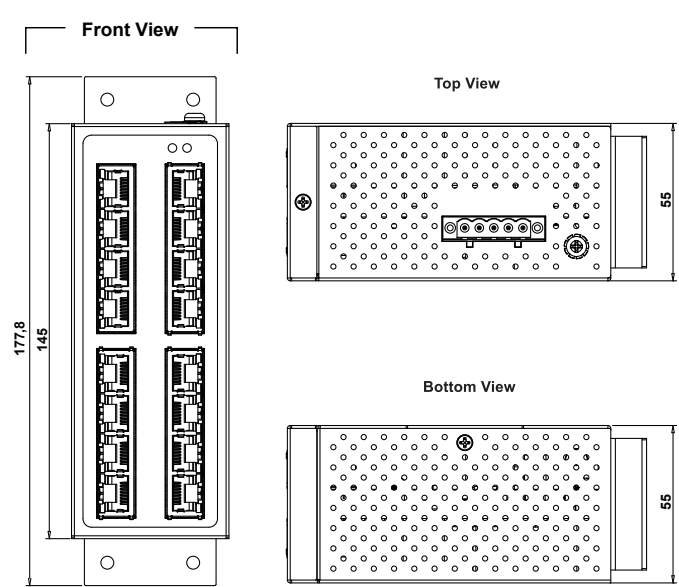
RJ-45								
10/100BASE-T(X)								
Pin	1	2	3	4	5	6	7	8
Signal	Tx+	Tx -	Rx+			Rx -		
1000BASE-T								
Pin	1	2	3	4	5	6	7	8
Signal	BI_DA+	BI_DA-	BI_DB+	BI_DC+	BI_DC-	BI_DB-	BI_DD+	BI_DD-

Field Maintenance and Service

If the device requires servicing of any kind, you may need to disconnect and remove it from its mounting. The initial installation should be done in a way that makes this as convenient as possible.

- Voltage/Power lines should be properly insulated as well as other cables. Be careful when handling the so as to not trip over
- Do not under any circumstance insert foreign objects of any kind into the heat dissipation holes located in the different faces of the device. This may not only harm the internal layout but might cause harm to you as well.
- Do not under any circumstance open the device for any reason. Please contact your dealer for any repair needed or follow the instructions on section of your User’s Manual.

Mechanical Dimensions (Unit=mm)



※ The wall mount kit illustrated in this document is for reference only and is not included in the package.

Warranty Policy

Warranty Conditions

Products supplied by Atop Technologies are covered in this warranty for sub-standard performance or defective workmanship. The warranty is not, however, extended to goods damaged in the following circumstances:

- (a) Excessive forces or impacts
- (b) War or an Act of God: wind storm, fire, flood, electric shock, earthquake
- (c) Use of unqualified power supply, connectors, or unauthorized parts/kits
- (d) Replacement with unauthorized parts

RMA and Shipping Costs Reimbursement

Customers shall always obtain an authorized "RMA" number from Atop before shipping the goods to be repaired to Atop. When in normal use, a sold product shall be replaced with a new one within 3 months after purchase. The shipping cost from the customer to Atop will be reimbursed by Atop.

After 3 months and still within the warranty period, it is up to Atop whether to replace the unit with a new one; normally, as long as a product is under warranty, all parts and labor are free of charge to the customers.

After the warranty period, the customer shall cover the cost for parts and labor. Three months after purchase, the shipping cost from the customer to Atop will not be reimbursed, but the shipping cost from Atop to the customer will be paid by Atop.

Limited Liability

Atop shall not be held responsible for any consequential losses from using Atop's product.

Warranty Period

Product Categories	Warranty	Product Categories	Warranty
Ethernet Switches	5 Years	DIN-Rail Power Supplies	3 Years
Wireless		Power Adaptors	1 Year
Serial Device Servers		Antennas	
Modbus Gateways		Other Accessories	
Media Converters			
Embedded Device Servers			

The warranty certification will not be effective until an authorized stamp issued by Atop's overseas agents.

Purchase Date: / / (yyyy/mm/dd)

Serial Number



Atop Customer Services and Supports

1. Please contact your local dealers or Atop Technical Support Center at the following numbers.
+ 886-3-550-8137 (Atop Taiwan)
+ 86-21-6495-6232 (Atop China)
2. Please report the defected problems via Atop's Web site or E-mail account
Web Site : www.atop.com.tw, e-mail : service@atop.com.tw
Web Site : www.atop.com.cn, e-mail : service@atop.com.cn

— Any changes to this material will be announced on Atop website. —