

## Hardware Installation Guide



Industrial Cellular Wireless Router  
CWR5805



Industrial Wireless Router  
AWR5805

Version 1.0  
Updated on Dec., 2021

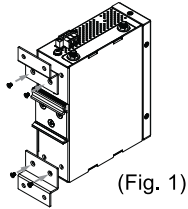
+ 886-3-5508137  
+ 886-3-5508131  
www.atop.com.tw

PN: 89900622G

## Installation Overview

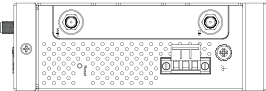
The device's appearance is as in the figure below.

1. If you have purchased the wall mount kit, proceed to place the screws on the back of the device as shown in (Fig. 1).

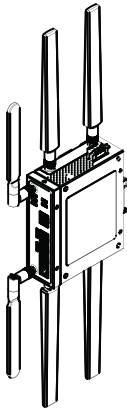


2. Although internal grounding has been done inside, in order to ensure overall maximum performance and protect your device it is still strongly advised to to ground the device properly; hazardous ESD can come into contact with it and damage your equipment.

On the power terminal block, there is a terminal for Frame Ground, you can choose whether to connect it to the grounding or you may opt to connect to the grounding screw next to the terminal block (the one chosen should be connected at all times) (Fig. 2)



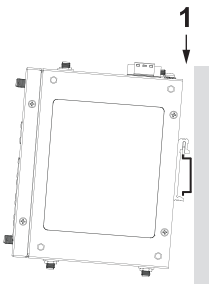
(Fig. 2)



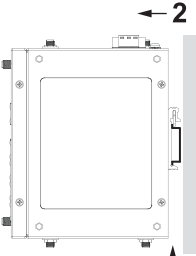
(Fig. 3)

3. Proceed then to fix the antennas to the female RP-SMA connectors deemed to (Fig. 3). You can then choose whether to plug in the I/O ports at this point or do it later depending on the actual location of the device or level of comfort for performing such operation.

4. Once the plate has been firmly put in place, proceed to mount the whole device as shown in (Fig. 4). Proceed to (Fig. 5) if you want to remove the device from DIN-Rail.



(Fig. 4)

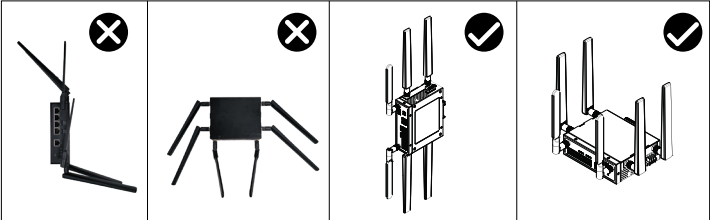


(Fig. 5)

5. Next we can then proceed to connect the device to the LAN (switch or PC, depending on the case), take care on using the RJ-45 connector; after this we can then proceed to the device's settings

### Other points to take into consideration when installing the device:

- The antennas are Wi-Fi / Mobile antennas; once the device is fixed to the rail, adjust antennas as shown in below checked (V) positions.



### Note:

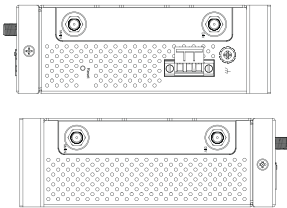
The first two pictures illustrate **not recommended** setup for the CWR5805; signal will strongly decrease with the antennas in these positions.

- If the device is going to be positioned horizontally, then the antennas should be set upright for better antenna performance. (Fig. 6).



(Fig. 6)

- The openings on the sides are for the device's heat dissipation and there may be hazardous voltages inside. Never obstruct, cover, or try to insert anything through them.



- CWR5805's factory IP by default is 192.168.1.1 you can access the device by its Web UI once it is connected to a physical network (or using DeviceView, for more information on DeviceView, please refer to manual). Please be aware that the PC needed for this procedure needs to be in the same subnet, otherwise please refer to User's Manual.

## Field Maintenance and Service

If the device requires any kind of services, you may need to disconnect and remove it from its mounting. The initial installation should be done in a way that makes this as convenient as possible.

- Voltage/Power lines should be properly insulated as well as other cables. Be careful when handling them to avoid tripping.
- Do not under any circumstances insert foreign objects of any kind into the heat dissipation holes located on the different surfaces of the device. This may not only harm the internal layout but might cause harm to you as well.
- Do not under any circumstances open the device casing for any reason. Please contact your dealer for any repair needed or follow the instructions on the User's Manual.

## Package Check List

Inside the package you will find the following items:

- Industrial Cellular Wireless Router CWR5805 x 1
- Wi-Fi antenna x 2
- 5G NR Mobile antennas x 4 ( or 4G LTE Mobile antennas x 2 )
- 3-Pin 5.08mm Lockable Terminal Block x 1
- Din Rail Kit x 1 (Already Mounted to the device)
- SIM Card Slot x 2 (already inserted to the device)

## Optional Accessories

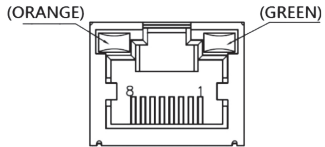
| Item          | Description                   |
|---------------|-------------------------------|
| WMK-454-Black | Black Aluminum Wall Mount Kit |

LED Indicators

| Name                            | Color  | Status   | Description  |
|---------------------------------|--------|----------|--|
| Power LED                       | Green  | On       | Power connected  |
|                                 |        | Off      | Power dis-connected  |
| Wi-Fi 2.4GHz                    | Green  | On       | Wi-Fi 2.4GHz activated   |
|                                 |        | Off      | Wi-Fi 2.4GHz deactivated   |
| Wi-Fi 5.0GHz                    | Green  | On       | Wi-Fi 5.0GHz activated   |
|                                 |        | Off      | Wi-Fi 5.0GHz deactivated   |
| Ethernet LED<br>(LAN / WAN)     | Orange | Blinking | 10/100 Mbps. Data is transmitting  |
|                                 |        | Off      | No data  |
|                                 | Green  | Blinking | 1000 Mbps. Data is transmitting  |
|                                 |        | Off      | No data  |
| 5G NR/4G LTE<br>Signal Strength | Green  | On       | 0-LED on (  □  □  □  ): No signal<br>1-LED on (  □  □  ■  ): Poor<br>2-LED on (  □  ■  ■  ): Good<br>3-LED on (  ■  ■  ■  ): Excellent |

PIN Assignments

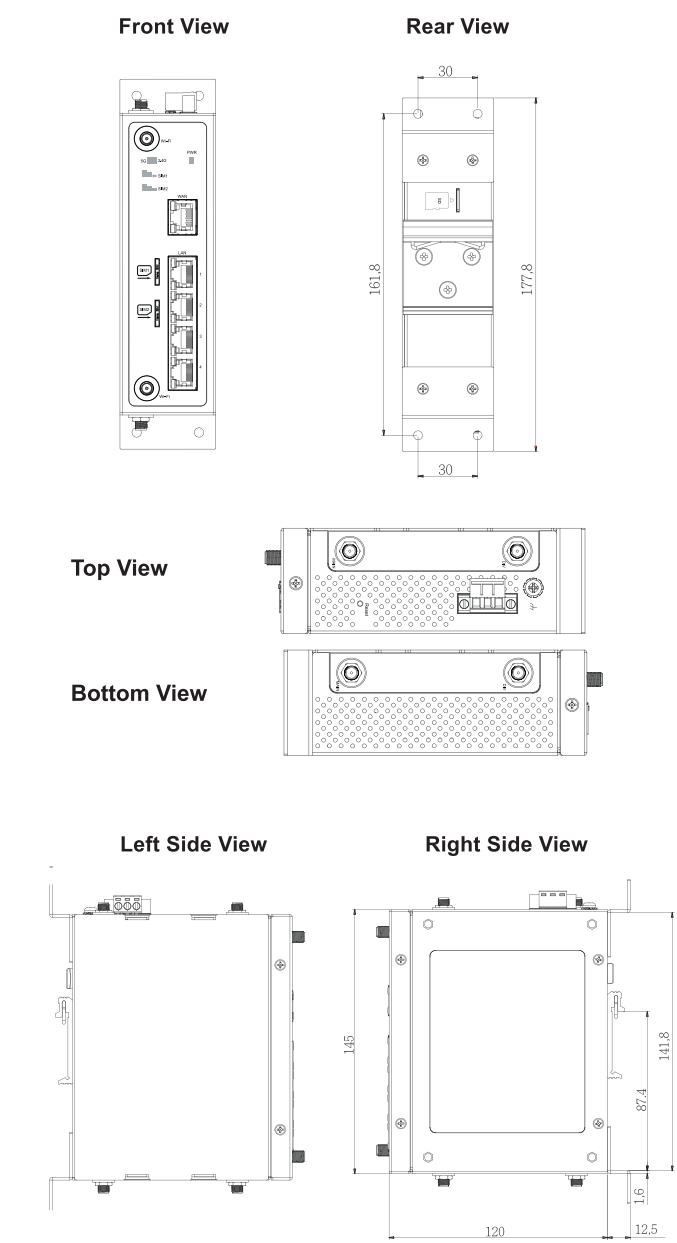
10/100/1000Base-TX Ethernet

|              |  |        |        |        |        |        |        |        |
|--------------|--|--------|--------|--------|--------|--------|--------|--------|
| RJ45         |  |        |        |        |        |        |        |        |
|              | 10/100 Base-TX   |        |        |        |        |        |        |        |
| Pin          | 1  | 2      | 3      | 4      | 5      | 6      | 7      | 8      |
| Signal       | TX+  | TX-    | RX+    |        |        | RX-    |        |        |
| 1000 Base-TX |  |        |        |        |        |        |        |        |
| Pin          | 1  | 2      | 3      | 4      | 5      | 6      | 7      | 8      |
| Signal       | BI_DA+   | BI_DA- | BI_DB+ | BI_DC+ | BI_DC- | BI_DB- | BI_DD+ | BI_DD- |

Device Dimensions,  
Physical Appearance and Mounting

Proceed to mount the CWR5805 in a dry location free from dirt and corrosive vapors, for more questions on environmental limitations please refer to the User’s Manual.

- Dimensions (mm)



Warranty Policy

Warranty Conditions

Products supplied by Atop Technologies are covered in this warranty for sub-standard performance or defective workmanship. The warranty is not, however, extended to goods damaged in the following circumstances:

- (a) Excessive forces or impacts
- (b) War or an Act of God: wind storm, fire, flood, electric shock, earthquake
- (c) Use of unqualified power supply, connectors, or unauthorized parts/kits
- (d) Replacement with unauthorized parts

RMA and Shipping Costs Reimbursement

Customers shall always obtain an authorized "RMA" number from Atop before shipping the goods to be repaired to Atop. When in normal use, a sold product shall be replaced with a new one within 3 months after purchase. The shipping cost from the customer to Atop will be reimbursed by Atop.

After 3 months and still within the warranty period, it is up to Atop whether to replace the unit with a new one; normally, as long as a product is under warranty, all parts and labor are free of charge to the customers.

After the warranty period, the customer shall cover the cost for parts and labor. Three months after purchase, the shipping cost from the customer to Atop will not be reimbursed, but the shipping cost from Atop to the customer will be paid by Atop.

Limited Liability

Atop shall not be responsible for any consequential losses from using Atop's product.

Warranty Period

| Product Categories      | Warranty |
|-------------------------|----------|
| DIN-Rail Power Supplies | 3 Years  |
| Antennas                | 1 Year   |

The warranty certification will not be effective until an authorized stamp issued by Atop’s overseas agents.

Purchase Date:                /                /                (yyyy/mm/dd)

Serial Number:



ATOP Customer Services and Supports

- Please contact your local dealers or Atop Technical Support Center at the following numbers.  
+ 886-3-550-8137    (Atop Taiwan)
- Please report the defected problems via Atop's website or email  
🌐 [www.atoponline.com](http://www.atoponline.com)    ✉ [service@atop.com.tw](mailto:service@atop.com.tw)

