



ATOP Technologies, Inc.

8-Port Slim Type Fast Ethernet Switch

EH3408ls / EH3408lu Series
EH3408s / EH3408u Series

Hardware Installation Guide

Version 1.0
Updated in January, 2022



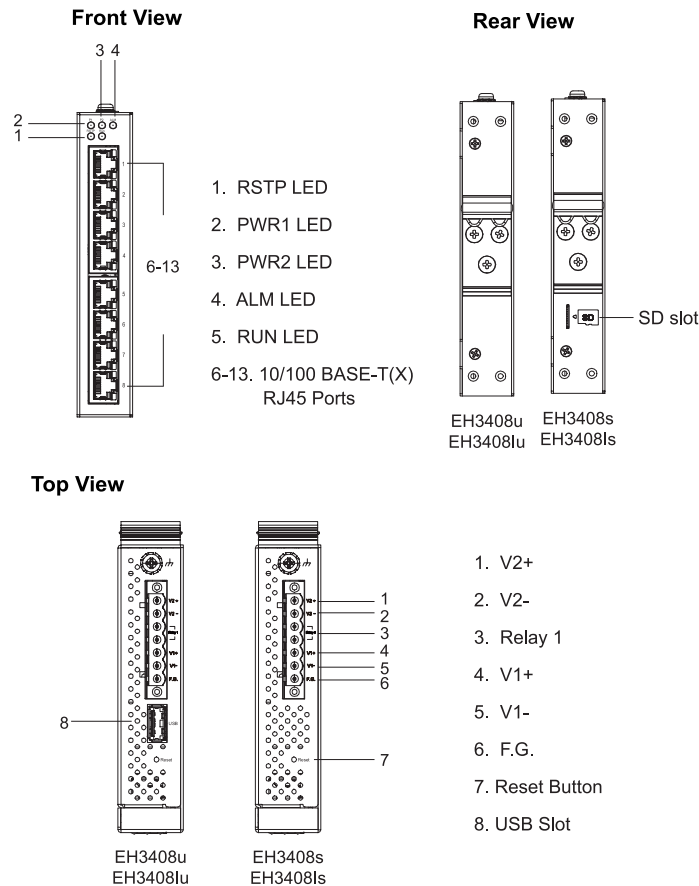
Package Check List

Inside the package you will find the following items:

- 8-Port Slim Type Fast Ethernet Switch x 1
- 7-Pin 5.08mm Lockable Terminal Block x 1
- DIN-Rail Kit (Already mounted to the device) x 1
- Installation Guide with Warranty Card x 1

- ⚠ Never install or work on electricity or cabling during periods of lightning activity. Never connect or disconnect power when hazardous gases are present.
- ⚠ Warning: Hot surface, do not touch. RESTRICTED ACCESS AREA: The equipment should only be installed in a Restricted Access Area.
- ⚠ Caution: CLASS 1 LASER PRODUCT. Do not stare into the beam.
- 🏠 This equipment should be installed indoors and not connected directly with equipment installed outdoors.
- ⚠ Operating altitude: Maximum 2000 m.

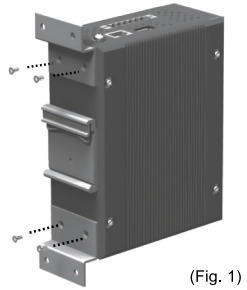
Product Layout



Installation Overview

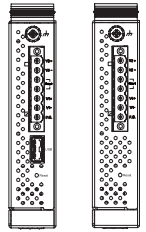
The device's appearance is on the right.

1. If you have purchased the wall mount kit, proceed to place the screws on the back of the device as shown in (Fig. 1).
2. Although internal grounding has been done inside, hazardous ESD can come into contact and damage your equipment. In order to ensure overall maximum performance and to protect your device, it is still strongly advised to ground the device properly.

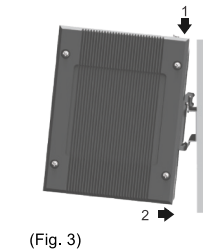


(Fig. 1)

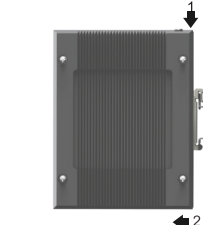
On the power terminal block, there is a terminal for Frame Ground. You can connect it either to grounding or to the grounding screw next to the terminal block (the one chosen should be connected at all times) (Fig. 2).



(Fig. 2)



(Fig. 3)

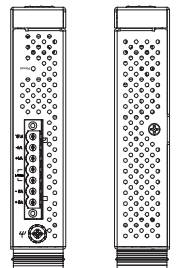


(Fig. 4)

3. You can then choose whether to plug in the other peripheral ports at this point or do it later depending on the actual location of the device or your level of comfort for performing such operation.
4. Once the plate is firmly in place, proceed to mount the whole device as shown in (Fig.3). Refer to (Fig.4) if you want to remove the device from DIN-Rail.
5. Connect the device to the LAN (switch or PC, depending on the case), taking care when using the RJ-45 connector. Afterwards, you can proceed to device settings.

■ The openings on the device's sides are for heat dissipation. Never obstruct, cover, or try to insert anything through them.

■ This switch's factory IP by default is 10.0.50.1 you can access the device by its Web UI once it is connected to a physical network (or via Management Utility. Refer to the Management Utility manual for more information). Please note that the PC needed for this procedure needs to be in the same subnet as EH3408. Otherwise, please refer to the device User's Manual.



- DIN-Rail screw specifications:
Screw type: M4
Screw depth: 6 mm (Max.)
Screw qty: 3 pcs

- Wall mount screw specifications:
Screw type: M4
Screw depth: 6 mm (Max.)
Screw qty: 4 pcs

LED Indicators

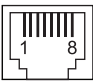
LED	Color	State	Description
PWR1/ PWR2	Green	On	Power is supplied from PWR1/PWR2
		Off	No power input detected from PWR1/PWR2
ALM	Red	On	Alarm is triggered by user defined events
		Off	Alarm is not triggered
LAN	Green	On	Ethernet is linked
		Blinking	Ethernet is active and data is being transmitted
		Off	Ethernet is not linked
	Amber	On	Ethernet is linked at 100Mbps
		Off	Ethernet is linked at 10Mbps
Ring	Green	On	RSTP or STP is established
		Blinking	RSTP or STP is enabled but not established
		Off	RSTP or STP is disabled
Run	Green	On	System is working normally
		Blinking	System is booting
		Off	System failed to boot-up

Power Requirements

Power input: 12-48 VDC, 0.5A Max.
This device is intended to be supplied by a UL Listed (certified) power supply of output: 12-48 VDC, 0.5A min.

Pin Assignments and Connections

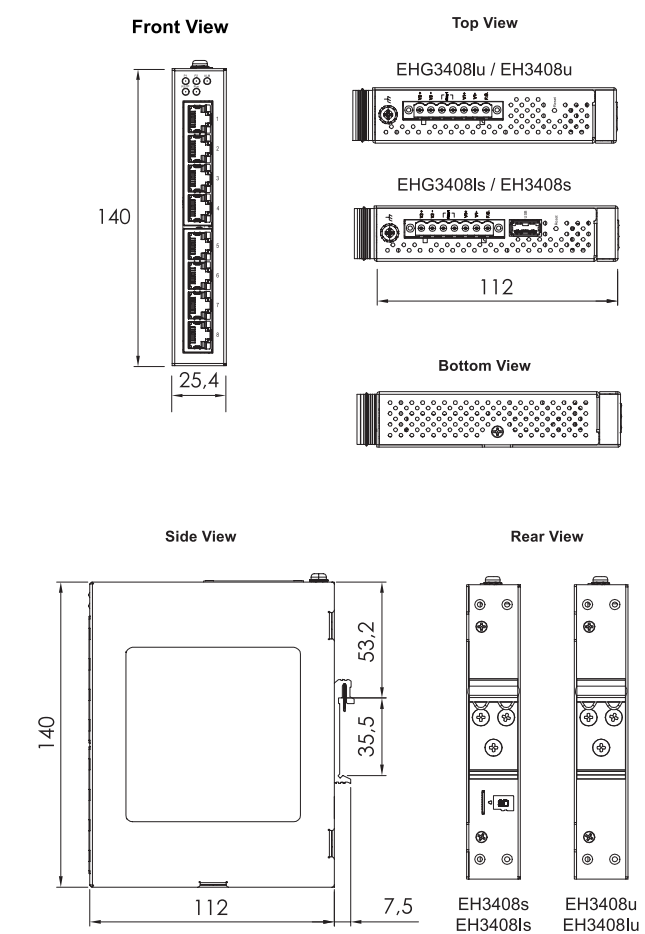
10/100 Ethernet Pinouts

RJ-45								
	10/100BASE-T(X)							
Pin	1	2	3	4	5	6	7	8
Signal	Tx+	Tx-	Rx+			Rx-		

Field Maintenance and Service

- If the device requires servicing of any kind, you may need to disconnect and remove it from its mounting. The initial installation should be done in a way that makes this as convenient as possible.
- Voltage/Power lines should be properly insulated as well as other cables. Be careful when handling to avoid tripping.
 - Do not under any circumstances insert foreign objects of any kind into the heat dissipation holes located on the different surfaces of the device. This may not only harm the internal layout but might cause harm to you as well.
 - Do not under any circumstances open the device casing for any reason. Please contact your dealer for any repair needed or follow the instructions on the User's Manual.

Mechanical Dimensions (Unit=mm)



※ The wall mount kit illustrated in this document is for reference only and is not included in the package.

Warranty Policy

Warranty Conditions

Products supplied by ATOP Technologies are covered in this warranty for sub-standard performance or defective workmanship. The warranty is not, however, extended to goods damaged in the following circumstances:

- (a) Excessive forces or impacts
- (b) War or an Act of God: wind storm, fire, flood, electric shock, earthquake
- (c) Use of improper or unauthorized power supply, connectors, or parts/kits
- (d) Replacement with unauthorized parts

RMA and Shipping Costs Reimbursement

Customers shall always obtain an authorized "RMA" number from ATOP before shipping the goods to be repaired to ATOP. When in normal use within 3 months after purchase, a sold product with defect shall be replaced with a new one. The shipping cost from the customer to ATOP will be reimbursed by ATOP. After 3 months and within the warranty period, ATOP has sole discretion whether to replace the unit with a new one; normally, as long as a product is under warranty, all parts and labor are free of charge to the customers. Three months after purchase, the shipping cost from the customer to ATOP will not be reimbursed, but the shipping cost from ATOP to the customer will be paid by ATOP. After the warranty period, the customer shall cover the cost for parts and labor.

Limited Liability

ATOP shall not be held responsible for any consequential losses from using ATOP's product.

Warranty Period

Product Categories	Warranty	Product Categories	Warranty
Ethernet Switches	5 Years	DIN-Rail Power Supplies	3 Years
Wireless		Power Adaptors	1 Year
Serial Device Servers		Antennas	
Modbus Gateways		Other Accessories	
Media Converters			
Embedded Device Servers			

The warranty certification will not be effective without an authorized stamp issued by ATOP or an ATOP overseas agent.

Purchase Date: / / (yyyy/mm/dd)

Serial Number

ATOP Customer Services and Supports

- Please contact your local dealers or ATOP Technical Support Center at the following number: +886-3-550-8137
- Please report any problems via ATOP's website or email
🌐 www.atoponline.com ✉ service@atop.com.tw

